



**Prominent  
Achievements  
of GTU**



5<sup>th</sup> Ranked in All Government Universities in INDIA in 2020



1<sup>st</sup> Rank in All Universities in Gujarat in 2020



1<sup>st</sup> Ranked in University in Gujarat in 2019

# GUJARAT TECHNOLOGICAL UNIVERSITY

## Graduate School of Engineering and Technology (GTU-GSET)

Shed-V, Gujarat Technological University Campus, Near Visat-Gandhinagar Circle,  
Visat-Gandhinagar Highway, Chandkheda, Ahmadabad- 382424. URL : [set.gtu.ac.in](http://set.gtu.ac.in)

### STUDENT INFORMATION BOOKLET A.Y. 2020-21



# CONTENT

Sr. No.	Particular	Page No
1	About Gujarat Technological University	1
2	About GTU-Graduate School of Engineering & Technology	2
3	Programs running at GTU-GSET	3
	1. ME Computer Engineering (Cyber Security)	3
	2. ME Electronics & Communication (Mobile Communication and Network Technology)	6
	3. PG Diploma in Data Science	9
4	GTU-GSET Various Committee	11
5	GTU- GSET Student Section Details	19
6	GTU-GSET Library and Learning Center (LLC)	20
7	GTU-GSET Academic Calendar and Evaluation scheme	22
8	GTU-GSET Common Amenities	23
9	GTU-GSET Faculty Details	24





## 1. About Gujarat Technological University



Gujarat Technological University is a premier academic and research institution which has driven new ways of thinking since its 2007 founding, established by the Government of Gujarat vide Gujarat Act No. 20 of 2007. Today, GTU is an intellectual destination that draws inspired scholars to its campus, keeping GTU at the nexus of ideas that challenge and change the world.

### ➤ Objectives

- Transparent and acceptable operations to all stakeholders.
- To provide quality education, training, vocation and research facilities to our students.
- To continuously organize and manage Faculty Development Programs (FDPs), Seminars and Conferences.
- Affiliate and coordinate with colleges for an effective education delivery mechanism.
- Timely and efficient conduct of the Examination process.
- To facilitate student's placements into suitable and meaningful careers and future of their choice.

GTU has partnered with leading industries and associations like Bosch Rexroth, Oracle, IEEE, NSE, BSE, C-DAC and many more to encourage industry-academia knowledge exchange



## 2. About GTU - Graduate School of Engineering and Technology

Gujarat Technological University has started Graduate School of Engineering and Technology (GSET) with AICTE affirmed post graduate courses. As per the demand of recent era GSET has started initially post graduate program in computer discipline with specialization in Cyber Security in the year of 2017. GSET has additionally begun another post graduate program in Electronics and Communication discipline with specialization in Mobile Communication and Network Technology in the year of 2018. Both of these programs have been run under Gujarat Technological University – Graduate School of Engineering and Technology (GTU-GSET) with the vision of giving outstanding specialized knowledge and prepare research oriented technocrats for society. Each post graduate program having intake capacity of 30.

Apart from that considering existing required skill in the market GSET also has started one year post graduate diploma course in Data Science from academic year 2020-21 with the intake capacity of 30 which is Gujarat Technological University approved course.

Following are salient features of the courses run under GTU-GSET:

- GTU-GSET is an university managed-govt. institute
- Admission through ACPC.
- Courses are run in academic campus of GTU.
- GSET students are guided and acknowledged by senior academicians and industry experts in capacity of advisors.
- Students are facilitated to showcase their talent by arranging various student led programs.
- Easy access to conferences and workshops organized by GTU in campus itself, elsewhere in India and abroad.
- High end company facility with latest laboratory equipment.
- Live research projects proposed by regulatory bodies and industries.
- Highest Placement opportunities.
- State of art library facility.
- On campus hostel facility is available for boys and girls.

### ➤ Vision of GTU-GSET

- To create an ecosystem in education and research that provides socially responsible, globally acceptable technocrats, innovators and entrepreneurs.

### ➤ Mission of GTU-GSET

- To develop state-of-art research facilities with well-equipped academic infrastructure
- To establish strong collaborations with research organizations, Institute of national importance and Industries that promote research and consultancies
- To encourage innovative practices to produce innovators and entrepreneurs
- To leverage International linkages of the University to establish strong international outreach



### 3. Programs running at GTU-GSET

#### 1. Post Graduate in Cyber Security

##### ➤ About Program

- Cyber Security Post Graduate program offered through GTU-GSET help students to understand modern information and system protection technology and methods. This AICTE approved Post Graduate ME course of two years duration has an intake of 30 students per year and the admissions are done through ACPC, Gujarat. It involves the learning of cybersecurity tools and techniques, services, systems, programming methodologies, and the best-designed approach. The students can be able to learn about the detection, prevention, and mitigation of cybercrime.

##### ➤ Vision of Program

- To create a research environment to provide socially responsible and technically sound postgraduate technocrats, innovators and entrepreneurs in the cyber security domain.

##### ➤ Mission of Program

- To develop state-of-art research facilities of cyber security and digital forensics with well-equipped academic infrastructure
- To encourage faculty to do research and consultancies in the field of cyber security and digital forensics.
- To establish strong linkages with research organizations, Institute of national importance and Industries for cyber security.
- To promote innovative practices to produce innovators and entrepreneurs in the field of cyber security.
- To leverage International linkage of Gujarat Technological University to establish strong international outreach for cyber security domain.





## Course Structure

Sr.No.	Sem	Course Type	Course Code	Course Name	Th Hrs	Tut Hrs	Pr Hrs	Course Credit
<b>Semester 1</b>								
1	1	Core-1	3715901	Mathematical Foundation for Cyber Security	3	0	2	4
2	1	Core-2	3715907	Defense Programming in Python	3	0	2	4
3	1	PE -01	3715903	Introduction to Cryptography	3	0	2	4
4	1		3715908	Digital Forensic				
5	1		3715909	Intrusion Detection				
6	1	PE -02	3715905	Cyber Crimes, Ethics and Laws	3	0	2	4
7	1		3715906	Cyber Security: Administration and Management				
8	1		3715910	Secure Software Design and Enterprise Computing				
9	1	-	3710001	Research Methodology & IPR	1	0	2	2
10	1	Aud-01	3700005	Audit Course-1 : Constitution of India	2	0	0	0
<b>Total (Hrs.)</b>					<b>15</b>	<b>0</b>	<b>10</b>	<b>18</b>
<b>Semester 2</b>								
1	2	Core-3	3725910	Operating system and Host Security	3	0	2	4
2	2	Core-4	3725908	Malware Analysis	3	0	2	4
3	2	PSE -03	3722323	Information Theory & Coding	3	0	2	4
4	2		3725611	Steganography & Digital Watermarking				
5	2		3725904	Web and Database Security				
6	2	PSE -04	3725902	Internetworking and security	3	0	2	4
7	2		3725903	Ethical Hacking				
8	2		3725905	Security Assessment and Risk Analysis				
9	2	Core	3720001	Mini Project with Seminar	0	0	4	2
10	2	Aud-02	3700001	English for Research Paper Writing	2	0	0	0
<b>Total (Hrs.)</b>					<b>14</b>	<b>0</b>	<b>12</b>	<b>18</b>
<b>Semester 3</b>								
1	3	PSE -05	3735903	Advance Algorithms	3	0	0	3
2	3		3735904	Machine Learning				
3	3		3735905	Mobile and Wireless Communication Security				
4	3	OE -01	3730005	Business Analytics	3	0	0	3
5	3		3730006	Industrial Safety				
6	3		3730007	Operation Research				
7	3	Internal Review -1	3730002	Internal Review-1	0	0	4	2
8	3	Dissertation	3730003	Dissertation Phase-I	0	0	16	8
<b>Total (Hrs.)</b>					<b>6</b>	<b>0</b>	<b>20</b>	<b>16</b>
<b>Semester 4</b>								
1	4	Internal Review-2	3740001	Internal Review 2	0	0	4	2
2	4	Dissertation	3740002	Dissertation Phase-II	0	0	28	14
<b>Total (Hrs.)</b>					<b>0</b>	<b>0</b>	<b>32</b>	<b>16</b>



### ➤ Program Specific Outcome

- To understand and analyse the various cyber-attacks, cyber laws, ethical hacking concepts, defending practice of cyber security, and digital forensics techniques.
- Identify, analyze and develop software and hardware solutions for complex problems in cyber security domain.
- Apply advanced knowledge to identify research challenges, and contribute individually or in team to resolve Cyber Security and Digital Forensics issues.

### ➤ Program Educational Objectives

- To impart knowledge/skill in the areas of cyber security, digital forensics, cyber laws and related disciplines.
- To work in reputed computer and IT security, Government and Research organizations or as an entrepreneur to build cyber safe nation.
- To able to cope with cyber security challenges through continuing education, increased responsibility, team work and ethical code of conduct.

### ➤ Laboratory Details

- Cyber Security and Digital Forensics Laboratory
- High Performance Computing (HPC) Laboratory
- Network Research Laboratory
- Vulnerability Assessment and Penetration Testing (VAPT) Laboratory





## 2. Mobile Communication and Network Technology

### ➤ About Program

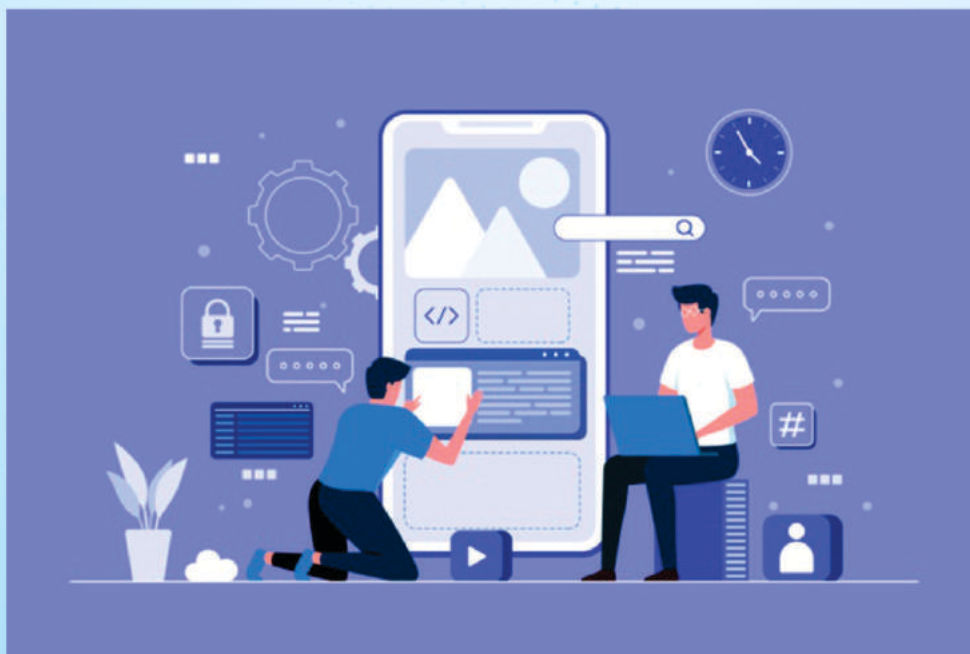
Mobile has emerged as truly pervasive and affordable Information and Communication Technology (ICT) platform in the last decade. Mobile Communication and Network Technology post graduate program focuses on strong fundamentals and on developing hands-on skills pertaining to the latest and most popular platforms like Symbian, Android, Windows Mobile. Students will gain knowledge in wireless technologies, such as Bluetooth, Wi-Fi, GPRS, EDGE, 3G, LTE, 4G, 5G and new future innovations. Students will be trained not only to use existing mobile platforms but also to build advanced and robust platform. The students will learn the latest and popular subjects like Internet of Things, Advanced Computer Networks, RF and Antenna Designing, Embedded Technology, Wireless Sensor Networks, Advanced Digital Signal Processing etc.

### ➤ Vision of Program

- To create research environment for producing socially responsible and technically sound technocrats, innovators and entrepreneurs in the field of advanced wireless communication and networking.

### ➤ Mission of Program

- To develop state of art research facilities with well equipped academic infrastructure.
- To encourage faculty and students for research and consultancies.
- To establish strong linkages with research organizations, Institute of national importance and industries of wireless communication and networking.
- To promote innovative practices in department to produce innovators and entrepreneurs.
- To leverage international linkage of university to establish strong international outreach.





## Course Structure

Sr.No	Sem	Course Type	Course Code	Course Name	Th Hrs	Tut Hrs	Pr Hrs	Course Credit
<b>Semester 1</b>								
1	1	Core-1	3712701	Advance Communication Network	3	0	2	4
2	1	Core-2	3710508	Wireless and Mobile Communication	3	0	2	4
3	1	PE-01	3710509	Optical Networks	3	0	2	4
4	1		3710510	Statistical Information Processing				
5	1		3712707	Antennas and Radiating Systems				
6	1	PE-02	3710513	Cognitive Radio	3	0	2	4
7	1		3710514	RF and Microwave Circuit Design				
8	1		3710515	DSP Architecture				
9	1	MLC	3710001	Research Methodology & IPR	1	0	2	2
10	1	Aud-01	3700005	Audit Course-1 : Constitution of India	2	0	0	0
<b>Total (Hrs.)</b>					<b>15</b>	<b>0</b>	<b>10</b>	<b>18</b>
<b>Semester 2</b>								
1	2	Core-3	3722711	Wireless Sensor Network	3	0	2	4
2	2	Core-4	3722712	Advanced Digital Signal Processing	3	0	2	4
3	2	PE-03	3720506	Satellite Communication	3	0	2	4
4	2		3720514	IOT and Applications				
5	2		3720515	Software Defined Networks				
6	2	PE-04	3720517	Markov Chain and Queueing System	3	0	2	4
7	2		3720518	MIMO System				
8	2		3720519	Embedded Wireless Technology				
9	2	Core	3720001	Mini Project	0	0	4	2
10	2	Aud-02	3700001	Audit Course-2 :English for Research Paper Writing	2	0	0	0
<b>Total (Hrs.)</b>					<b>14</b>	<b>0</b>	<b>12</b>	<b>18</b>
<b>Semester 3</b>								
1	3	PE-05	3730505	High Performance Network	3	0	0	3
2	3		3730506	Pattern Recognition and Machine learning				
3	3		3730507	Remote Sensing				
4	3	OE	3730006	Business Analytics	3	0	0	3
5	3		3730007	Operational Research				
6	3	Dissertation	3730002	Internal Review 1	0	0	4	2
7	3	Dissertation	3730003	Dissertation Phase-I	0	0	16	8
<b>Total (Hrs.)</b>					<b>6</b>	<b>0</b>	<b>20</b>	<b>16</b>
<b>Semester 4</b>								
1	4	Dissertation	3740001	Internal Review 2	0	0	4	2
2	4	Dissertation	3740002	Dissertation Phase-II	0	0	28	14
<b>Total (Hrs.)</b>					<b>0</b>	<b>0</b>	<b>32</b>	<b>16</b>

### ➤ Program Specific Outcome

- Understand, design and implement emerging technology in the field of mobile communication and network technology.
- To analyze real time problems, design appropriate system to provide solutions which are technically sound, cost effective and beneficial to the society in mobile communication and network technology.
- To furnish with necessary soft skills, managerial skill, analytical skills to work in the software and hardware industry

### ➤ Program Educational Objectives

- Engage in the effective practice of communication and networking engineering to recognize and solve important tribulations in a diverse range of application areas.
- Involve in research with proficiency in core areas of advanced communication and networking related engineering so as to comprehend engineering trade- offs, analysis, design and technical concepts to create novel solutions for the real life problems.
- Occupy constructively in successful careers in industry, academia and attain positions of importance where they have an impact on their business, profession, and community service with ethics.
- Competent enough in any challenging and dynamic environment communicate effectively in variety of professional context and incorporate government societal and industrial need.

### ➤ Laboratory Details

- Wireless Communication Laboratory
- Internet on Things Laboratory
- Wireless Sensor Network Laboratory
- RF and Microwave Laboratory
- Signal Processing Laboratory





### 3. Post Graduate Course in Data Science (1 Year)

#### ➤ About Program

By use of various web-based and mobile-based applications, voluminous data is generated. Hence, it becomes challenging task to handle these data and most importantly to understand the data. Looking at the current and futuristic trends, there will be demand of data science experts who can understand the nature of data, analyze the data and take result-oriented decisions after analysis of the data. This program is for students who are interested in developing skills in data science and data analytics. During one year of program the students will learn insights of subjects like Machine Learning, Programming in Python, Blockchain Technology, Big Data Analytics, Data Analysis using R, Cloud Computing etc.

After acquiring the skills from this program, the candidates can be employed as

- (1) Data Engineer who is responsible for creating the infrastructure for collating data from various sources, cleaning it, transforming it and storing it so that it can be used by other people in the team.
- (2) Data Scientist whose work typically starts where the job of data engineer ends. He is responsible for extracting insights from the data using various tools & techniques, producing basic data visualizations and reporting dashboards
- (3) Machine Learning Engineer who is responsible for analysing data using data preparation and cleaning techniques, statistical/predictive analytics techniques and interpreting the statistical output (hypothesis testing, ANOVA, regression (linear, logistic), clustering, time series, decision trees, naive bayes and many more), machine learning techniques, etc.

#### ➤ Laboratory Details

- Programming Language Lab
- Data Analytics Lab
- High Performance Computing Lab



## Course Structure

Sr. No.	Sem	Course Type	Course Code Yet not received	Course Name	Th Hrs	Pr Hrs	Course Credit
Semester 1							
1	1	Core-1	1618001	Data Structures and Algorithm	4	2	5
2	1	Core-2	1618002	Statistics and Exploratory Data Analysis	4	2	5
3	1	Core-3	1618003	Fundamentals of Machine Learning	4	2	5
4	1	Core-4	1618004	Introduction to Python Programming	2	6	5
Total					14	12	20
Semester 2							
1	2	Core-5	1628001	Software Tools for Data Management	0	6	3
2	2	Core-6	1628002	Cloud Computing	4	2	5
3	2	Core-7	1628003	Big Data Analytics	4	2	5
4	2	Core-8	1628004	Mini Project	0	4	2
5	2	PSE	1628005	Blockchain Technology	4	2	5
6	2		1628006	Deep Learning			
7	2		1628007	Natural Language Processing			
8	2		1628008	Business Analytics			
Total (Hrs.)					12	16	20





#### 4. GTU-GSET Committees

Statutory Committees					
Sr No	Committee	No	Committee members	Designation /Representation in Committees	Remarks/Scope
1	<b>Department Student Grievance Redressal Committee (DSGRC)</b>	1	Dr. S D Panchal, Professor & Director, GTU-GSET	Chairperson	<ul style="list-style-type: none"> <li>➤ This committee has been formed with reference to GTU/Grievance Circular/2020/ 2442 and UGC regulation 14-4/2012 (CPP-II) dated 06/05/2019. The DSGRC shall submit its report with recommendations (if any) to the head of the institute/ Vice Chancellor, with a copy there of to aggrieved students within 15 days from the date of receipt of the complaint.</li> <li>➤ Term of chairperson and members of committee shall be for period of 2 years from the date of the issue of this document , special invitees shall be continue as member for period of 2 years or till they remain as student of GSET whichever is less.</li> <li>➤ The quorum of the meeting of DSGRC including chairperson excluding special invitee shall be three. In considering the grievances before it, the DSGRC follows principles of natural justice.</li> </ul>
		2	Dr. Sanjay Chauhan, Professor, GTU-GSP	Member	
		3	Dr. Kaushal Bhatt, Asso. Professor, GTU-GSMS	Member	
		4	Dr. S K Hadia, Asso. Professor, GTU-GSET	Member	
		5	Ayushi Singh, Student, MCNT	Special Invitee	
		6	Harsh Kiratstra, Student, Cyber Security	Special Invitee	
2	<b>SC-ST Cell</b>	1	Dr. S. D. Panchal, Professor & Director GTU-GSET	Chairperson	<ul style="list-style-type: none"> <li>➤ This committee has been formed with reference to GTU/SC-ST Cell/2016/9080 dated 23/11/2016.</li> <li>➤ The committee has to monitor any issue related SC-ST students, counseling of students, regular meeting with the students, and arrangement for students' complaints. If any such incident comes to the notice of the authorities, action should be taken against the erring Students/ Official/ Faculties members promptly as per guidelines of UGC.</li> </ul>
		2	Prof. Vagmin Joshi Asst. Professor, GTU-GSET	Member	
		3	Prof. Hemal Nayak Asst. Professor, GTU-GSET	Member	
		4	Prof. Komal Borisagar Asso. Professor, GTU-GSET	Member	
		5	Shri Ranchhodbhai Khambhala, Librarian-GTU-GSET	Member	

3	<b>Anti-Ragging Committee</b>	1	Dr. S. D. Panchal Professor & Director, GTU-GSET	Chairperson	<ul style="list-style-type: none"> <li>➤ This committee has been formed with reference to GTU/Academic/Anti-Ragging/ 2018/7371 dated 03/10/2018.</li> <li>➤ The committee has to monitor incidents of ragging either as a victim or as a witness, counseling of students on ragging, regular meeting with the students, arrangement for students' complaints. If any such incident comes to the notice of the authorities, action should be taken against the erring Students/ Official/ Faculties members promptly as per guidelines of UGC.</li> </ul>
		2	Prof. Komal Borisagar Asso. Professor, GTU-GSET	Member	
		3	Prof. Deepak Upadhyay Asst. Professor, GTU-GSET	Member	
		4	Sharvik Joshi, Student, Cyber Security	Special Invitee	
		5	Charmi Dave, Student, Cyber Security	Special Invitee	
4	<b>Sexual Harassment &amp; Monitoring Committee (Internal Complaint Committee)</b>	1	Dr. S. D. Panchal Professor & Director, GTU-GSET	Chairperson	<ul style="list-style-type: none"> <li>➤ This committee has been formed with reference to GTU/ Sexual Harassment &amp; Monitoring Committee/ 2019/ 4644 Date: 30.05.2019.</li> <li>➤ The committee has to monitor Prevention, Prohibition and Redressal of Sexual Harassment of women/ men employees and Students (girls/boys) in the institution.</li> <li>➤ The committee has to monitor any issue related of sexual harassment among staff and students, counseling of students, regular meeting with the students, and arrangement for students' complaints. If any such incident comes to the notice of the authorities, action should be taken against the erring Students/ Official/ Faculties members promptly as per guidelines of UGC.</li> </ul>
		2	Prof. Seema Joshi Asst. Professor, GTU-GSET	Member	
		3	Prof. Rutika Ghariya Asst. Professor, GTU-GSET	Member	
		4	Prof. Mahesh Panchal Asst. Professor, GTU-GSET	Member	
		5	Prof. Raj Hakani Asst. Professor, GTU-GSET	Member	
		6	Aditya Dave, Student, Cyber Security	Special Invitee	
		6	Priya Mishra, Student, MCNT	Special Invitee	
5	<b>Women Development Committee</b>	1	Prof. Komal Borisagar Asso. Professor, GTU-GSET	Chairperson	<ul style="list-style-type: none"> <li>➤ This committee has been formed with reference to GTU/ WDC/2019/12408 dated 16/11/2019.</li> <li>➤ The committee has to work as per guidelines of the Women Development Committee of the University.</li> <li>➤ All the female staff and students of the institute are informed to contact the committee for any kind development required for women.</li> </ul>
		2	Prof. Seema Joshi Asst. Professor, GTU-GSET	Member	
		3	Prof. Rutika Ghariya Asst. Professor, GTU-GSET	Member	



		4	Komal Prajapati Lab Assistant, GTU-GSET	Member	
		5	Charmi Dave, Student, Cyber Security	Member	
		6	Priya Mishra, Student, MCNT	Member	
6	<b>GTU Innovation Council</b>		<p>Dr. S. K. Hadia Asso. Professor, GTU-GSET</p> <p>Prof. Raj Hakani Asst. Professor, GTU-GSET</p> <p>Prof. Margam Suthar Asst. Professor, GTU-GSET</p> <p>Prof. Hemal Nayak Asst. Professor, GTU-GSET</p> <p>Prof. Vagmin Joshi Asst. Professor, GTU-GSET</p> <p>Prof. Mahesh Panchal Asst. Professor, GTU-GSET</p>	<p>Chairperson</p> <p>Member</p> <p>Member</p> <p>Member</p> <p>Member</p> <p>Member</p>	<ul style="list-style-type: none"> <li>➤ The Committee will make awareness amongst students regarding support from GTU innovation council under various schemes.</li> <li>➤ Committee will encourage students to apply for funding to GTU Innovation Council for different projects.</li> <li>➤ Committee will be responsible to promote the innovation and research environment in the Institute</li> <li>➤ Planning and implementation of the various initiatives taken by university/AICTE/MHRD and UGC in the domain of innovation and start-up</li> </ul>



## Institute Level Committees

Sr No	Committee	No	Committee members	Designation /Representation in Committees	Remarks/Scope
1	Internal Quality Assurance Cell (IQAC)	1	Prof. S. K. Hadia Asso. Professor, GTU-GSET	Coordinator	<ul style="list-style-type: none"> <li>➤ IQAC will work towards standardization of activities and processes and strive for continuous improvements in standards and their achievement.</li> <li>➤ It will promote measures for institutional functioning towards continuous quality enhancement through quality culture and establishment of best practices.</li> <li>➤ It will help to develop a sound basis for decisions required for improving institutional functioning and the building of an organized methodology of documentation.</li> <li>➤ It will establish procedures and modalities to collect data and information on various aspects of institutional functioning for enabling easier and faster decision-making.</li> <li>➤ It will enhance quality awareness within the institution and establish the credibility for external accreditation.</li> </ul>
		2	Prof. Komal Borisagar Asso. Professor, GTU-GSET	Member	
		3	Prof. Seema Joshi Asst. Professor, GTU-GSET	Member	
		4	Prof. Mahesh Panchal Asst. Professor, GTU-GSET	Member	
2	Student Support and Counseling Committee (National/ International student)	1	Prof. Gautam Makwana Asst. Professor, GTU-GSET	Coordinator	<ul style="list-style-type: none"> <li>➤ The committee aims to nurture, support and guide in academic, social, personal development, and research services throughout their stay in the institute.</li> <li>➤ It helps to enhance the students' effectiveness, ability, and skills to build their healthy lifestyle.</li> <li>➤ It handles all services such as joining, enrollment, scholarship, certifications etc.</li> <li>➤ Attention toward the international students and related correspondence with the Authority</li> </ul>
		2	Prof. Seema Joshi Asst. Professor, GTU-GSET	Member	
		3	Prof..Komal Borisagar Asso. Professor, GTU-GSET	Member	
		4	Prof. Deepak Upadhyay Asst. Professor, GTU-GSET	Member (International Students)	
		5	Prof. Mahesh Panchal Asst. Professor, GTU-GSET	Member	



3	<b>Library Committee</b>	1	Prof. Komal Borisagar Asso. Professor, GTU-GSET	Coordinator	<ul style="list-style-type: none"> <li>➤ The committee works to provide state of art library and e-library facilities to all the stakeholder of the Institute</li> <li>➤ Committee will provide latest journals, e-books, different magazines as per the requirement of the curriculum.</li> <li>➤ Budget planning and utilization under the library head</li> </ul>
		2	Prof. Margam Suthar Asst. Professor, GTU-GSET	Member	
		3	Prof. Rutika Ghariya Asst. Professor, GTU-GSET	Member	
		4	Shri Ranchhodbhai Khambhala Librarian, GTU-GSET	Member	
4	<b>Academic and Admission Committee</b>	1	Prof. S. D. Panchal Professor & Director, GTU-GSET	Chairperson	<ul style="list-style-type: none"> <li>➤ The committees will work for academic planning, reforms, internal examination planning and execution</li> <li>➤ Course/Student progress monitoring during the term</li> <li>➤ Information booklet</li> <li>➤ Result Analysis and review</li> <li>➤ The committee works as per the guidelines of ACPC and GTU authorities for admission process of various Institute programs.</li> <li>➤ Committee will work for admission promotion, student's inquiry, whole admission procedure.</li> </ul>
		2	Prof. Seema Joshi Asst. Professor, GTU-GSET	Coordinator (Cyber security)	
		3	Prof. Komal Borisagar Asso. Professor, GTU-GSET	Coordinator (MCNT)	
		4	Prof. Mahesh Panchal Asst. Professor, GTU-GSET	Coordinator (PG-DS)	
5	<b>Scrutiny Committee for Seed Money Scheme of GTU</b>	1	Prof. S. D. Panchal Professor & Director, GTU-GSET	Chairperson	<ul style="list-style-type: none"> <li>➤ The committee has to review proposals for seed money schemes received from faculties/students of GSET</li> <li>➤ Committee will scrutinize proposals as per guideline of GTU SMS policy and submit them to University IQAC.</li> </ul>
		2	Prof. S. K. Hadia Asso. Professor, GTU-GSET	Coordinator	
		3	Prof. Gautam Makwana Asso. Professor, GTU-GSET	Member	
		4	Prof. Seema Joshi Asst. Professor, GTU-GSET	Member	

6	<b>Research, Consultancy &amp; Publications Committee</b>	1	Prof. S D Panchal Professor & Director, GTU-GSET	Chairperson	<ul style="list-style-type: none"> <li>➤ To promote the Research and Consultancy in the Institute</li> <li>➤ To Develop overall research Oriented ecosystem in the Institute</li> <li>➤ To invite experts to promote research</li> <li>➤ To proliferate the various grant information among the various faculties</li> <li>➤ To plan/organize skill enhancement programs for the faculties and students</li> </ul>
		2	Prof. S. K. Hadia Asso. Professor, GTU-GSET	Coordinator	
		3	Prof. Gautam Makwana Asso. Professor, GTU-GSET	Member	
		4	Prof. Komal Borisagar Asso. Professor, GTU-GSET	Member	
			Prof Seema Joshi Asst Professor, GTU-GSET	Member	
7	<b>Research, Consultancy &amp; Publications Committee</b>	1	Prof. S D Panchal Professor & Director, GTU-GSET	Chairperson	<ul style="list-style-type: none"> <li>➤ To promote the Research and Consultancy in the Institute</li> <li>➤ To Develop overall research Oriented ecosystem in the Institute</li> <li>➤ To invite experts to promote research</li> <li>➤ To proliferate the various grant information among the various faculties</li> <li>➤ To plan/organize skill enhancement programs for the faculties and students</li> </ul>
		2	Prof. S. K. Hadia Asso. Professor, GTU-GSET	Coordinator	
		3	Prof. Gautam Makwana Asso. Professor, GTU-GSET	Member	
		4	Prof. Komal Borisagar Asso. Professor, GTU-GSET	Member	
			Prof Seema Joshi Asst Professor, GTU-GSET	Member	
8	<b>TechFest, Cultural and Sport Promotion Committee</b>	1	Prof. Deepak Upadhyay Asst. Professor, GTU-GSET	Coordinator	<ul style="list-style-type: none"> <li>➤ The formation of the various student clubs (Technical and Non-Technical)</li> <li>➤ The committee aims to promote co-curricular and extra-curricular activities in the Institute</li> <li>➤ To promote the sport culture and to organize the sports event in the Institute</li> <li>➤ Mentorship support to various student club</li> <li>➤ Encourage students for participation in various events</li> </ul>
		2	Prof. Rutika Ghariya Asst. Professor, GTU-GSET	Member	
		3	Prof. Mridul Seth Asst. Professor, GTU-GSET	Member	



	<b>Research, Consultancy &amp; Publications Committee</b>	1	Prof. Raj Hakani Asst. Professor, GTU-GSET	Member	
		2	Prof. Hemal Nayak Asst. Professor, GTU-GSET	Member	
9	<b>Institute Newsletter Committee</b>	1	Prof. S. D. Panchal Professor & Director, GTU-GSET		➤ To publish the Institute newsletter quarterly ➤ Data collection and selection for to publish in the newsletter
		2	Prof. Rutika Ghariya Asst. Professor, GTU-GSET		
		3	Prof. Gautam Makwana Asso. Professor, GTU-GSET		
		4	Prof. Mahesh Panchal Asst. Professor, GTU-GSET		
		5	Shri Ranchhodbhai Khambhala Librarian, GTU-GSET		
10	<b>Institute Store and Purchase Committee</b>	1	Prof Seema Joshi Asst Professor, GTU-GSET	Coordinator (Purchase)	➤ To look in the Institute purchase matters Necessary approvals and bill passing process Estate related development and maintenance related work
		2	Prof Gautam Makwana Asso. Professor GTU-GSET	Coordinator (New Campus)	➤ Dead stock/Consumable register update ➤ Lekawada Campus Planning
		3	Komal Prajapati Lab Assistant, GTU-GSET	Member	
		4	PI / Co-PI / Concern Faculty	Invitee	
11	<b>Industry and Outreach Committee</b>		Prof Gautam Makwana Asso. Professor GTU-GSET	Coordinator	➤ The Committee will be responsible for to organize Industry visit, Placement Fair, Open House events, Form Industry advisory board for each Programs
			Prof Mahesh Panchal Asst Professor, GTU-GSET	Member	➤ Pre-placement activities
			Prof Seema Joshi Asst Professor, GTU-GSET	Member	

12	ICT & Estate Committee	1	Prof Mahesh Panchal Asst. Professor GTU-GSET	Coordinator	<ul style="list-style-type: none"> <li>➤ ICT Planning and Execution monitoring</li> <li>➤ Liaison with University IT and Estate Department</li> <li>➤ Overall Institute ambiance monitoring</li> <li>➤ Institute website update and monitoring</li> <li>➤ Social Media</li> </ul>
		2	Prof Deepak Upadhyay Asst Professor, GTU-GSET	Member	
		3	Prof Mridul Seth Asst Professor, GTU-GSET	Member	
		4	Shri Harishbhai Vaghela Class-3, GTU-GSET	Member	
13	Skill Enhancement Program Committee	1	Prof. S. D. Panchal Professor & Director, GTU-GSET	Chairperson	<ul style="list-style-type: none"> <li>➤ The planning of skill enhancement programs and monitoring</li> <li>➤ Expert Talk/ Seminar/ Workshop/FDP etc planning and monitoring</li> <li>➤ To start professional student chapters</li> </ul>
		2	Prof Mahesh Panchal Asst. Professor GTU-GSET	Member	
		3	Prof Deepak Upadhyay Asst Professor, GTU-GSET	Member	
		4	Prof Mridul Seth Asst Professor, GTU-GSET	Member	
		5	Prof Margam Suthar Asst Professor, GTU-GSET	Member	





## 5. GTU- GSET Student Section Details

Students are main stake holders of the GTU-GSET. The objectives of the student section are to assist various activities of the institute namely, reporting, enrollment, anti-ragging, student grievance, mentoring, scholarships, student affairs, maintenance of records, and certifications from the institute and the University. All daily routine activities of the students are to be carry-out by the section. It is an attempt to create a platform to minimize load on the students.

Following accomplishments are to be carry out by the section.

- To Joining report with required documents after an admission
- To enrol with the Gujarat Technological University (GTU)
- To sign Anti-ragging affidavits; as per AICTE rules and regulations, available @ <https://set.gtu.ac.in/wp-content/uploads/2020/09/AICTE-Ragging.pdf>
- To issue Student I-cards
- To issue Library cards
- To collect of semester receipts
- To issue various academic certificates
- To assist students in scholarship schemes, National Scholarship Portal, Mukhyamantri Yuva Swavalamban Yojna (MYSY), AICTE, UGC, Digital Gujarat Portal (OBC, ST, SC etc) as per government rules. For further information, visit <https://set.gtu.ac.in/scholarship>
- To certify concessional pass from ST/BRTS/AMTS/ Railway public transport services.
- To assist in student grievance and student affairs
- To assist for endorsements/certifications for various academic requirements.
- To distribute mark sheet, NAMO e-Tablet to the students.
- To circulate various notice regarding student activities.

For further information, visit : <https://set.gtu.ac.in/student-corner/>

### Contact:

Ms. Aditi Darji, Admin Assistant  
Email : [gset\\_ss@gtu.edu.in](mailto:gset_ss@gtu.edu.in)

### Section In-charge

Prof. (Dr.) Gautam D. Makwana  
Email : [asso\\_gautam\\_makwana@gtu.edu.in](mailto:asso_gautam_makwana@gtu.edu.in)

## 6. GTU- GSET Library and Learning Center (LLC)

GTU-GSET is determinant to provide facilities to students of a vast ocean of knowledge for the high tech human life, easy and anywhere accessible knowledge for their development. GTU-GSET has been given one remote centre to facilitate ME students and supervisor.

### ➤ Facilities:

- E-LIBRARY has been established at the GTU-GSET to help in research to all stakeholders of institute.
- E-LIBRARY provides facilities for GSET students to access E-journals, E-Books, and other E-resources at their convenience to enable the advancement of knowledge and discovery with no cost to students.
- E-LIBRARY - is well equipped with computer systems and Internet connection to access E-resources. Students can also access GTU'S repository to gain the ideas about different projects, dissertation, Ph.D. thesis etc.
- Availability of E-Resource/Other Resources/Free EBooks.

### ➤ Accessible Repositories of GTU to GSET students

- **ALCE Presentation**

- o Active Learning Creating Excitement (ALCE) TAB contains available Engineering Branch wise -subject wise material (in PPT format)

- **IPR/Patent**

- o IPR TAB gives guidance for patent related activity

- **ALVCOM**

- o TAB provides NPTEL Videos link for viewing and learning purpose

- **E-Project/E- Thesis/ E-Dissertation**

- o To improve novelty of research and innovation through students it is desirable to benchmark prior art and particularly efforts being taken before.
- o More than 30000 projects/ thesis are being submitted to university as a part of academic requirements in UG/PG/other levels. To ensure that the new batch of students either take new projects or to carry forward semi-finished projects.
- o All past projects need to be publicly shared for students. Through E resources GIC has shared more than 75000 projects/ thesis in public domain in categorized format at [porjects.gtu.ac.in](http://porjects.gtu.ac.in) for the reference and benefits of student efforts.
- o This helps to check duplication and improve originality of student innovations every year. It also helps co-creation among different groups who are doing complementary or supplementary projects.
- o The platform enables to pool variety of stakeholders like faculty members, students and domain experts to take the projects end to end. This digital platform helps in building efficiency of entire innovation value chain around student projects in university.



## Access Norms

- While entering the library except laptops, readers are not allowed to carry their personal belongings (bags, brief-cases, parcels etc.) and eatable items (biscuits, cookies, fruits, chocolates, cold drinks, tea/coffee, etc.). Their belongings should be deposited at the security counter.
- Always carry your library membership card when you visit the library, failing so will forbid your entry to library.
- Readers should maintain peace in the library and should not disturb other users in any way.
- Loud discussions are allowed only in the discussion area.
- Library's computing facilities and database access is meant for GSET faculty members, students, staff and registered library members only.
- The computer terminals are to be used only for searching of GSET resources.
- Users of the library should note that all e-resources subscribed are licensed materials and cannot be shared with outside community as it may lead to copyright/license violation.
- Library's photocopying services is fee based.

### Contact:

Mr. Ranchhodbhai Khambhala

Librarian

Email :gset\_library@gtu.edu.in

### Section In-charge

Prof. (Dr.) Komal R. Borisagar

Email :asso\_komal\_borisagar@gtu.edu.in



## 7. GTU-GSET Academic Calendar & Evaluation Scheme

### Academic Planning

- The whole academic term will be divided into two teaching phase i.e. Teaching phase-I and Teaching Phase-II and academic calendar along with theory/practical session time-table is circulated by academic section accordingly.
- Each student has to strictly follow it.
- Faculties/Students must be enrolled in LMS (Learning Management System) for their all teaching endowments.
- Each faculty course coordinator will declare the course lesson planning with session details on GTU-GSET Course website/LMS portal
- Students can view his/her academic progress through LMS login only
- The Overall academic term will be planned as below

	Teaching Phase-I (In between the term)	Teaching Phase-II (At the end of the term)
Course having Theory/Practical Components	<ul style="list-style-type: none"> <li>• Student Attendance review-I*</li> <li>• Course Progress Review-I</li> <li>• Continuous Evaluation -I (CE-I)- 30 Marks (consisting of 20 marks theory and 10 marks assignment)</li> </ul>	<ul style="list-style-type: none"> <li>• Student Attendance review-II*</li> <li>• Course Progress Review-II</li> <li>• Continuous Evaluation II (CE-II) – 30 Marks (consisting of 20 marks theory and 10 marks assignment)</li> </ul>
IR-I (Semester-3)	Internal review-I (A): 40 Marks	Internal review-I (B): 60 Marks
IR-II (Semester-4)	Internal review-II(A): 40 Marks	Internal review-II(B): 60 Marks

\* Attendance needs to be ensure as per University norms, to grant the term

### Evaluation Methodology

Theory		Practical		Total
ESE(E)	PA(M)	ESE (V)	PA(I)	
70#	30*	30#	20*	150

\*Internal component, #external component, ESE-End Semester Exam, PA-Progressive Assessment

Internal component* and evaluation methodology		
Course Evaluation	PA(M): 30	Average marks obtained in Continuous Evaluation-I and Continuous Evaluation-II
	PA(I): 20	Total marks obtained in practical sessions will be converted into 20 marks (10 practical*10 mark each = 100 marks/5)
IR -I (Sem-3)	IR1 (A) +IR1 (B) - Rubrics based evaluation	
IR -II (Sem-4)	IR2 (A) +IR2 (B) - Rubrics based evaluation	



## 8. GTU-GSET Common Amenities

### ➤ **Shree Aryabhata Seminar Hall**

On campus very high quality seminar hall is available to carry out different curricular and extracurricular activities with the best ICT facility.

### ➤ **Swami Vivekananda Conference Hall**

To carry out technical short term programs, expert session, staff and student development program, expert session exclusive conference hall is available with advance audio-visual facilities.

### ➤ **Dispensary on Campus**

In any health related issues or emergence in the campus doctor is available during 11.00 am to 2.00 pm at university main building to take care of all the stakeholders of university.

(Location : GTU main building: C wing – ground floor;

Coordinator : Dr. Sanjay Joshi)

### ➤ **Major Dyanchand Gymnasium**

To enrich health and fitness and create healthy environment on campus one gymnasium with latest instruments has been provided and managed by GTU sports section. All students can go for daily workout.

(Location : Boys Hostel: Ground Floor;

Coordinator : Dr. Akash Gohil)

### ➤ **Girls – Boys Hostel**

On campus highly secured two separate building of girls and boys hostels are available for hostel with good quality of food service. Infrastructure of the hostel is very luxurious with excellent studying environment.

(Location : On Campus-Boys Hostel;

Coordinator : Prof. Deepak Uppadhyay)

(Location : On Campus-Girls Hostel;

Coordinator : Prof. Seema Joshi)

### ➤ **Computer Centre**

High configuration computers are available. Students can carry out their advance research on the prominent and fast technology compatible systems. To compete recent software demand extra laboratory has been developed.

### ➤ **Super Computer Research Lab**

Most powerful and speedy super computer is existed at the GTU-GSET. Students can do high profile and real time research with the help of super computer in the field of network security and mobile communication.

## 9. GTU-GSET Faculty Details

Sr. No.	Faculty Name	Designation	Qualification	Exp .	Area of Research
1	Prof. S.D. Panchal	Professor and Director	Ph.D.	21	Image Processing and Network Security
2	Prof. S.K. Hadia	Associate Professor	Ph.D.	22	Wireless Communication, Data Communication, IoT
3	Prof.G.D. Makwana	Associate Professor	Ph.D.	19	Machine Learning, IoT, 5G Technology, RF and Antenna
4	Prof. K.R.Borisagar	Associate Professor	Ph.D.	17	Wireless Communication, Data Communication, IoT
5	Prof. S.B.Joshi	Assistant Professor	M.Tech. (CSIR), Ph.D. (Pursuing)	11	Cloud Security, Blockchain Technology, Malware Analysis
6	Prof. Mahesh Panchal	Assistant Professor	ME (CE), Ph.D. (Pursuing)	15	Artificial Intelligence, Blockchain Technology, Machine Learning
7	Prof. Deepak Upadyay	Assistant Professor	ME(IT), Ph.D. (Pursuing)	7	Cyber Security, Machine Learning , IoT
8	Prof. Margam Suthar	Assistant Professor	ME(EC)	7	Wireless Communication, Data Communication
10	Prof. Hemal Nayak	Assistant Professor	ME(EC), Ph.D. (Pursuing)	6	Networking, Adhoc Network and IoT
9	Prof. Vagmin Joshi	Assistant Professor	ME(EC)	8	Digital Dersign, VLSI, IoT
11	Prof. Raj Hakani	Assistant Professor	ME(EC), Ph.D. (Pursuing)	6	Robotics, RF and Antenna Desing
12	Prof. Rutika Ghariya	Assistant Professor	ME (EC)	6	Optimization and Antenna Design